

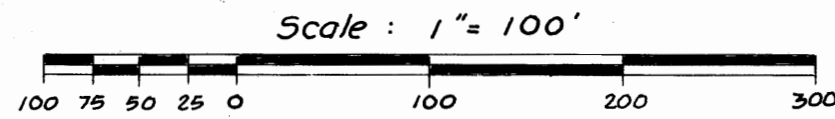
FIRST ADDITION TO INDIANTOWN PARK

A SUBDIVISION OF A PORTION OF SECTION 5, Twp. 40^s, Rge. 39^e.
MARTIN COUNTY, FLORIDA.

RADER AND ASSOCIATES
ENGINEERS AND ARCHITECTS
MIAMI ~ FLORIDA

JOB NO. 3014
MAY 1958

N. 1/4 Cor. Sec. 5
Twp. 40^s Rge. 39^e



DEDICATION

KNOW ALL MEN BY THESE PRESENTS That TAYLOR MANORS, INC. a Florida Corporation organized and existing under the Laws of the State of Florida, the owners in fee simple of the tract of land shown on the attached plat entitled "FIRST ADDITION TO INDIANTOWN PARK"; and more particularly described as follows: Commencing at the South 1/4 corner of Section 5, Township 40 South, Range 39 East, Martin County, Florida, and running thence N. 89° 56' 20" E along the center line of Warfield Boulevard, which is also the South line of Section 5, for a distance of 10.00 feet to a point; run thence N. 0° 01' 20" W along a line which is 10 feet East of and parallel to the East line of the West 1/2 of said Section 5 for a distance of 1187.04 feet to the Point of Beginning; run thence N. 0° 01' 20" W along the said last described line for a distance of 1610.95 feet to a point; run thence S. 89° 58' 40" W for a distance of 290.00 feet to a point; run thence S. 0° 01' 20" E for a distance of 765.00 feet to a point; run thence S. 89° 58' 40" W for a distance of 36.86 feet to the point of curvature of a circular curve to the right; thence run Northwestwardly along the arc of said circular curve to the right having a radius of 100 feet, a central angle of 35° 48' 20" for a distance of 62.49 feet to a point of tangency; run thence N. 54° 13' 00" W for a distance of 756.94 feet to a point; run thence S. 35° 47' 00" W for a distance of 565.00 feet to a point; run thence S. 54° 13' 00" E for a distance of 875.00 feet to a point, said point being the most Easterly corner of Plat 'B' as recorded in Plat Book, Vol. 79, of the Public Records of Martin County, Florida; run thence S. 35° 47' 00" W for a distance of 325.00 feet to a point; run thence S. 54° 13' 00" E for a distance of 276.67 feet to a point; run thence S. 60° 26' 35" E for a distance of 63.35 feet to a point; run thence S. 68° 55' 21" E for a distance of 43.47 feet to a point of intersection with a circular curve to the left; run thence Northeastwardly along the arc of said circular curve to the left having a radius of 1420 feet, chord bearing N. 21° 53' 21" E, and a central angle of 9° 22' 15" for a distance of 232.24 feet to a point; run S. 72° 47' 46" E radially to the last mentioned curve for a distance of 180.00 feet to the point of intersection with a circular curve concentric with the last mentioned curve; run thence Southwestwardly along the arc of said concentric curve, having a radius of 1600.00 feet a chord bearing S. 17° 42' 40" W, and a central angle of 1° 00' 52" for a distance of 28.33 feet to a point; run thence Due East for a distance of 300.40 feet to the Point of Beginning.

has caused the same to be surveyed and platted and do hereby dedicate to the perpetual use of the public for proper purposes, all of the Courts, Drives, Streets, Circle & Avenue shown hereon, reserving however unto itself, successors, assigns or legal representatives the reversion or reversions of the same whenever abandoned by the public or discontinued by Law.

In Witness Whereof, it has caused these presents to be signed by its President and attested by its Secretary this 12th day of May AD. 1958.

TAYLOR MANORS, INC.

Attest: Harold Jacobs Secretary By: Jack Taylor President
HAROLD JACOBS JACK TAYLOR

ACKNOWLEDGEMENT

STATE OF FLORIDA COUNTY OF DADE ss. I HEREBY CERTIFY: That on this day personally appeared before me an officer duly authorized to administer oaths and take acknowledgements, Jack Taylor, President and Harold Jacobs, Secretary respectively of TAYLOR MANORS, INC., a Corporation organized and existing under the Laws of the State of Florida, and to me well known to be the persons described who executed the foregoing instrument, and acknowledged to and before me that they executed the same for the uses and purposes therein expressed.

Witness my hand and seal this 12th day of May AD. 1958.

My Commission Expires: October 31, 1958 Harry J. Dehman
Notary Public State of Florida at Large

This Plat was approved and the foregoing dedication was approved and accepted by the Board of County Commissioners of Martin County, Florida, this 27th day of May AD. 1958.

Approved: Ray F. Boyd Board of County Commissioners
RAY F. BOYD

WE HEREBY CERTIFY: That the attached Plat entitled "FIRST ADDITION TO INDIANTOWN PARK" is a true and correct representation of the land as recently surveyed and platted under our direction; also that the Permanent Reference Monuments were set on the 13th day of September AD. 1957, in accordance with Section 7, Chapter 10275 (No. 253) Laws of the State of Florida.

RADER AND ASSOCIATES

File No 63179

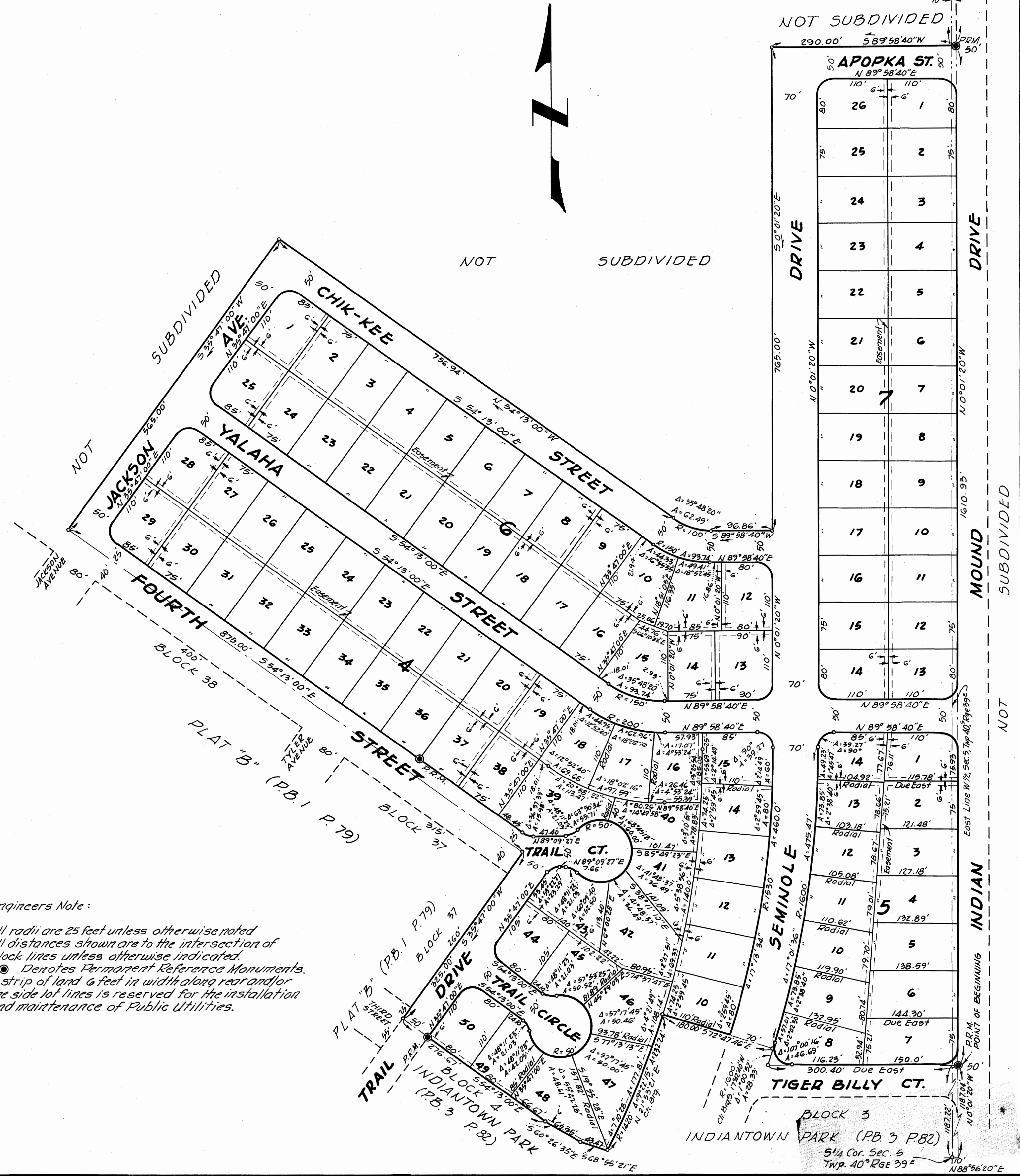
By: William M. Rader
Registered Engineer No. 717
Registered Surveyor No. 106
State of Florida

Filed for Record this 27th day of May AD. 1958 at 12:00 PM in Book 3 of Plats, Page 93 of the Public Records of Martin County, Florida. This complies with the Laws of the State of Florida.

Dorothy Pierce
CLERK OF CIRCUIT COURT - D.C.
By: Letitia J. ...

Engineers Note:

All radii are 25 feet unless otherwise noted.
All distances shown are to the intersection of block lines unless otherwise indicated.
● Denotes Permanent Reference Monuments.
A strip of land 6 feet in width along rear and/or the side lot lines is reserved for the installation and maintenance of Public Utilities.



Calc. H.P.M.
Drawn J.B.
Chk. G.H.
App. V.V.W.